

RER7-900

RER7-900,
Maxium payload 7 kg with maxium reach 911 mm.

■ **Highlights**
High protection level IP65 of the robot body help customers easy to face dusty, d
misty, high humidity and other harsh environment;
Thanks to the high stiffness transmission design and advanced trajectory algorithm,
the improved robot accuracy performance helps customers to face variety of
application scenarios.

■ **Applications**
It can be used in handling operations, sorting, assembling, painting, etc.

■ **Industries**
Suitable for 3C, food and beverage, metal
parts, education, plastic, pharmaceutical
and other industries.



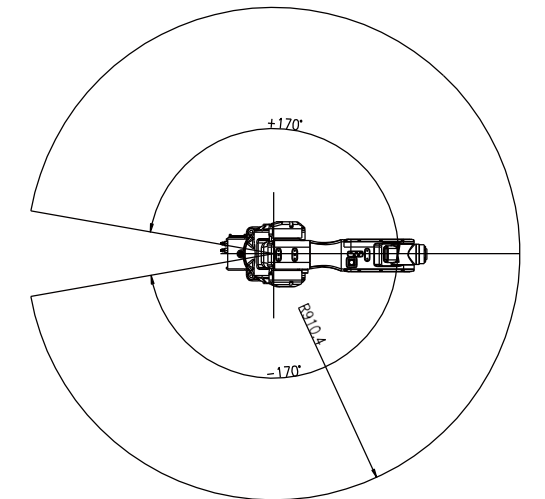
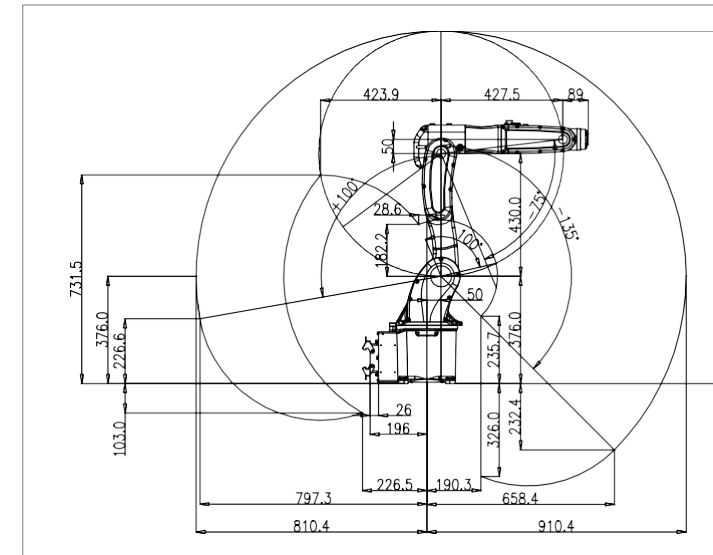
RUNDE

SPECIFICATIONS

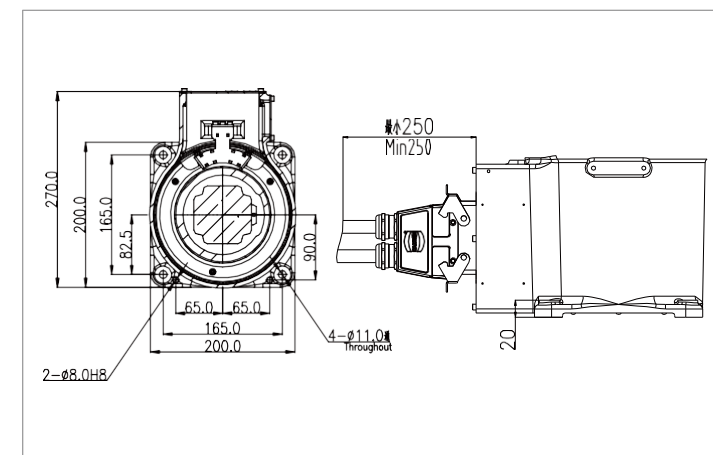
Model	RER7-900	
Type	Articulated	
Controlled axes	6 Axes	
Max. payload on wrist	7 kg	
Repeatability	±0.03 mm	
Robot weight	38 kg	
Reach	911 mm	
Robot IP grade	IP65/IP67 (Wrist)	
Cabinet IP grade	IP20	
Drive mode	AC servo drive	
Installation	Floor, Upside-down, Wall	
Installation environment	Ambient temperature	0~45 °C
	Ambient humidity	RH≤80% (No dew nor frost allowed)
	Vibration acceleration	4.9 m/s ² (<0.5 G)

Allowable load moment at wrist	J 4	16 N·m
	J 5	16 N·m
	J 6	9 N·m
Allowable load inertia at wrist	J 4	0.45 kg·m ²
	J 5	0.45 kg·m ²
	J 6	0.14 kg·m ²
Maximum speed	J 1	300°/sec
	J 2	255°/sec
	J 3	320°/sec
	J 4	450°/sec
	J 5	450°/sec
	J 6	720°/sec
Motion range	J 1	±170°
	J 2	+100°/-135°
	J 3	+200°/-75°
	J 4	±190°
	J 5	±120°
	J 6	±360°

OPERATING SPACE



BASE MOUNTING SIZE



END FLANGE MOUNTING SIZE

