

RER12H-1600

RER12H-1600,
Maxium payload 12 kg with maxium reach 1604 mm.

Highlights

Thanks to the large and hollow design, the cable can be routed in a hollow way, effectively improving the service life of the cable, and the posture change in a narrow space is more flexible;
High-rigid gearbox with strong impact resistance helps customers challenge various application scenarios;
Thanks to the high stiffness transmission design and advanced trajectory algorithm, the improved robot accuracy performance helps customers to face variety of application scenarios.

Applications

It can be used in handling operations, sorting, grinding, polishing, etc.

Industries

Suitable for metal parts, logistics and other industries.

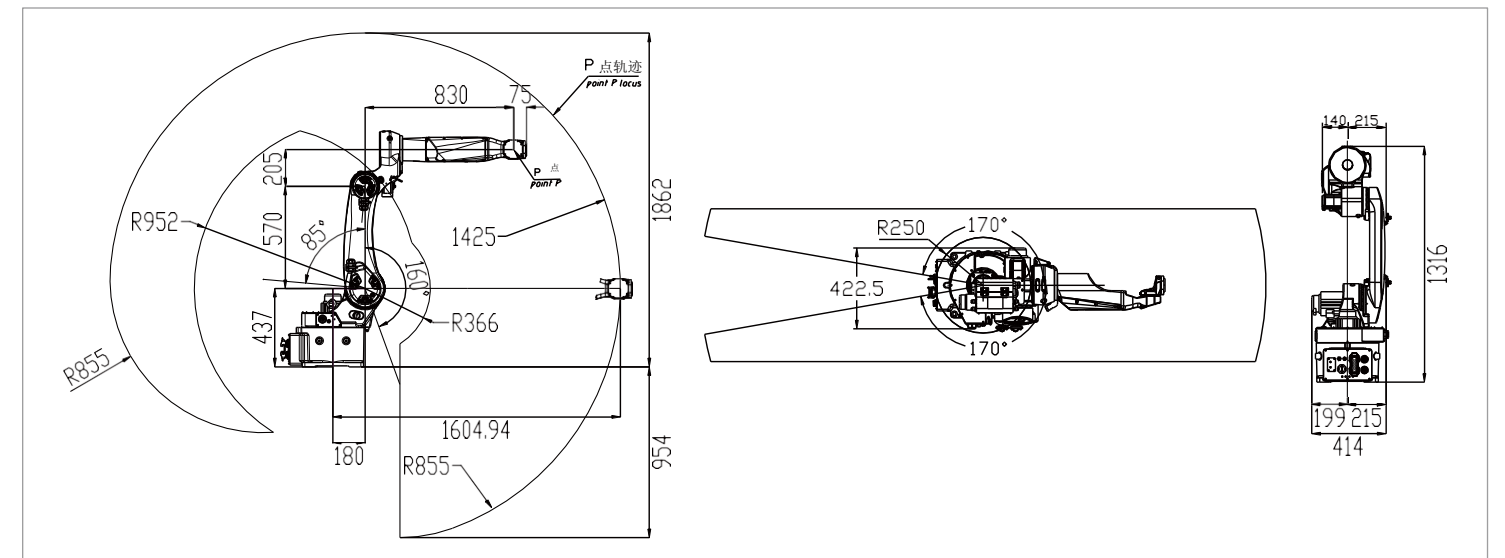


SPECIFICATIONS

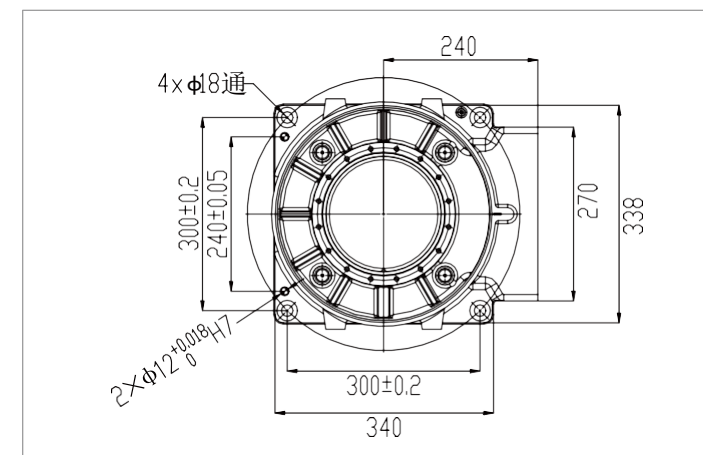
Model	RER12H-1600	
Type	Articulated	
Controlled axes	6 Axes	
Max. payload on wrist	12 kg	
Repeatability	±0.03 mm	
Robot weight	169 kg	
Reach	1604 mm	
Robot IP grade	IP54 / IP67 (Wrist)	
Cabinet IP grade	IP20/ IP54 (Optional)	
Drive mode	AC servo drive	
Installation	Floor, Upside-down, Wall	
Installation enviroment	Ambient temperature	0~45 °C
	Ambient humidity	RH≤80% (No dew nor frost allowed)
	Vibration acceleration	4.9 m/s ² (<0.5 G)

Allowable load moment at wrist	J 4	22 N·m
	J 5	22 N·m
	J 6	9.8 N·m
Allowable load inertia at wrist	J 4	0.65 kg·m ²
	J 5	0.65 kg·m ²
	J 6	0.17 kg·m ²
Maximum speed	J 1	265° /sec
	J 2	255° /sec
	J 3	270° /sec
	J 4	450° /sec
	J 5	450° /sec
	J 6	700° /sec
Motion range	J 1	±170°
	J 2	+85° /-150°
	J 3	+175° /-85°
	J 4	±190°
	J 5	±190° (The connect outside robot body.) ±140° (The connect inside robot body.)
	J 6	±450° (The connect outside robot body.) ±220° (The connect inside robot body.)

OPERATING SPACE



BASE MOUNTING SIZE



END FLANGE MOUNTING SIZE

