

RER20-1100

RER20-1100,
Maxium payload 20 kg with maxium reach 1143 mm.

Highlights

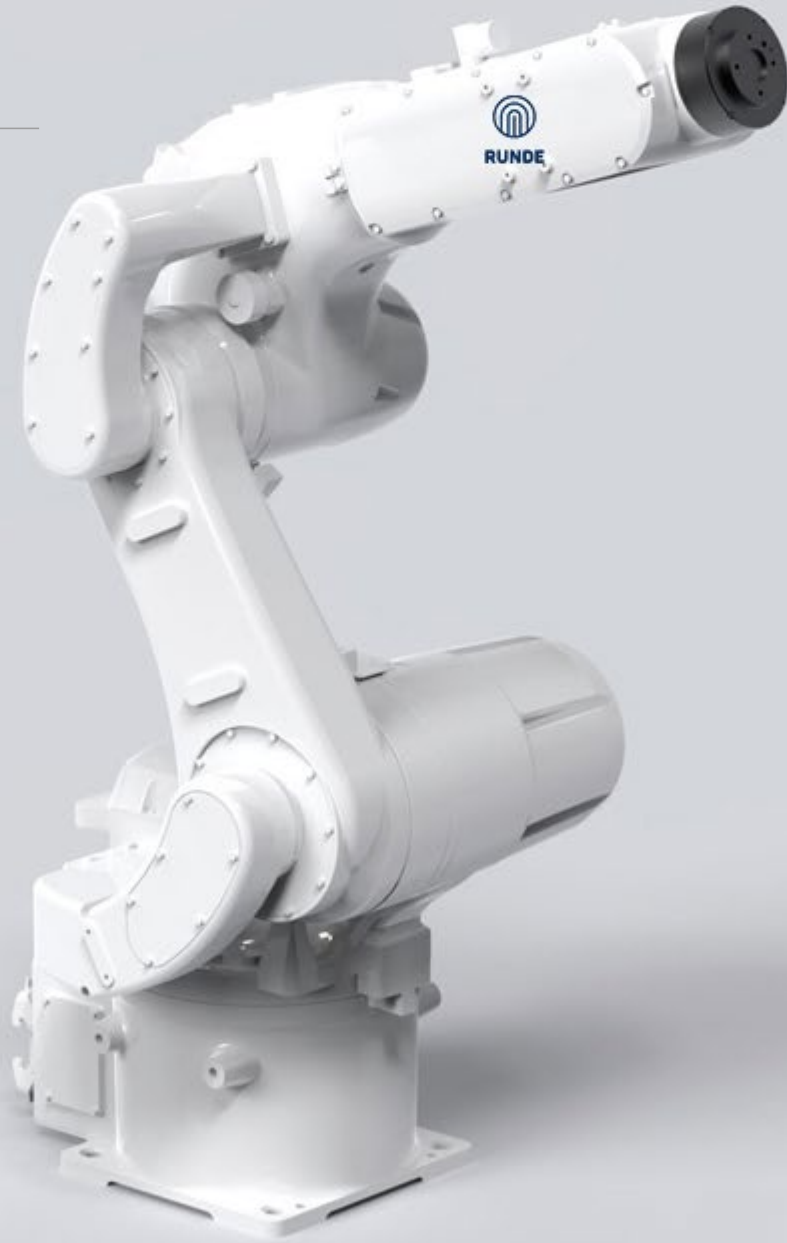
Thanks to the optimization of stiffness and inertia brought by the new mechanical design, with advanced trajectory algorithm. The takt improved by 20%-30%;
40% less monuting size of the base (comparing the previous types) plus compact cabinet design helps customers deploy the production line with more flexibility;
IP67 wrist, high protection grade, to overcome harsh environment;

Applications

It can be used in handling operations, assembling, grinding, polishing, deburring, etc.

Industries

Suitable for PCB, metal parts, photovoltaic and other industries.



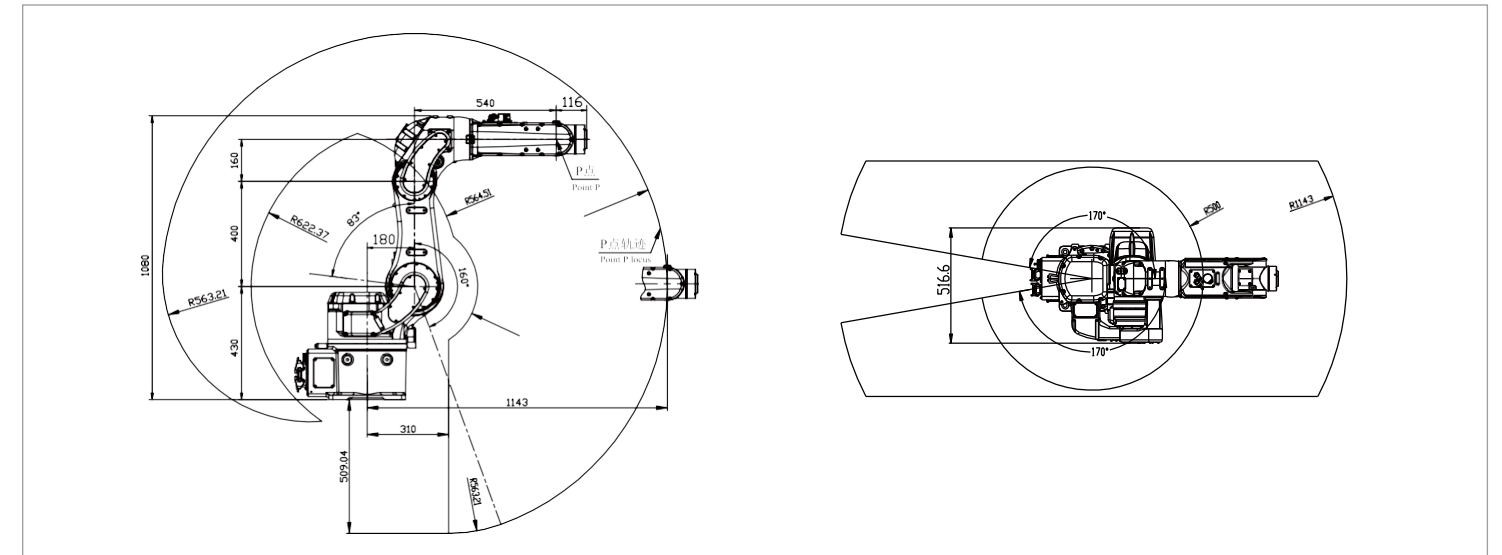
RUNDE

SPECIFICATIONS

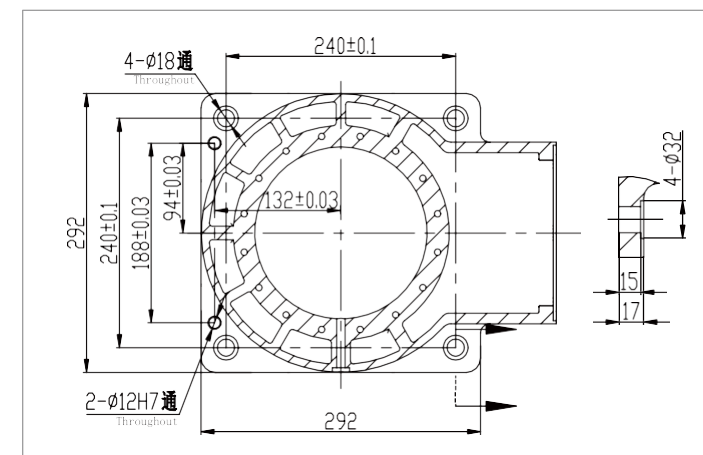
Model	RER20-1100	
Type	Articulated	
Controlled axes	6 Axes	
Max. payload on wrist	20 kg	
Repeatability	±0.03 mm	
Robot weight	145 kg	
Reach	1143 mm	
Robot IP grade	IP65/IP67 (Wrist)	
Cabinet IP grade	IP20/IP54 (Optional)	
Drive mode	AC servo drive	
Installation	Floor, Upside-down, Wall, Angle	
Installation enviroment	Ambient temperature	0~45 °C
	Ambient humidity	RH ≤ 80% (No dew nor frost allowed)
	Vibration acceleration	4.9 m/s ² (<0.5 G)

Allowable load moment at wrist	J 4	42 N · m
	J 5	42 N · m
	J 6	20 N · m
Allowable load inertia at wrist	J 4	2 kg · m ²
	J 5	2 kg · m ²
	J 6	0.7 kg · m ²
Maximum speed	J 1	260° /sec
	J 2	255° /sec
	J 3	210° /sec
	J 4	450° /sec
	J 5	450° /sec
	J 6	600° /sec
Motion range	J 1	±170°
	J 2	+83° /-160°
	J 3	+175° /-85°
	J 4	±190°
	J 5	±130°
	J 6	±360°

OPERATING SPACE



BASE MOUNTING SIZE



END FLANGE MOUNTING SIZE

